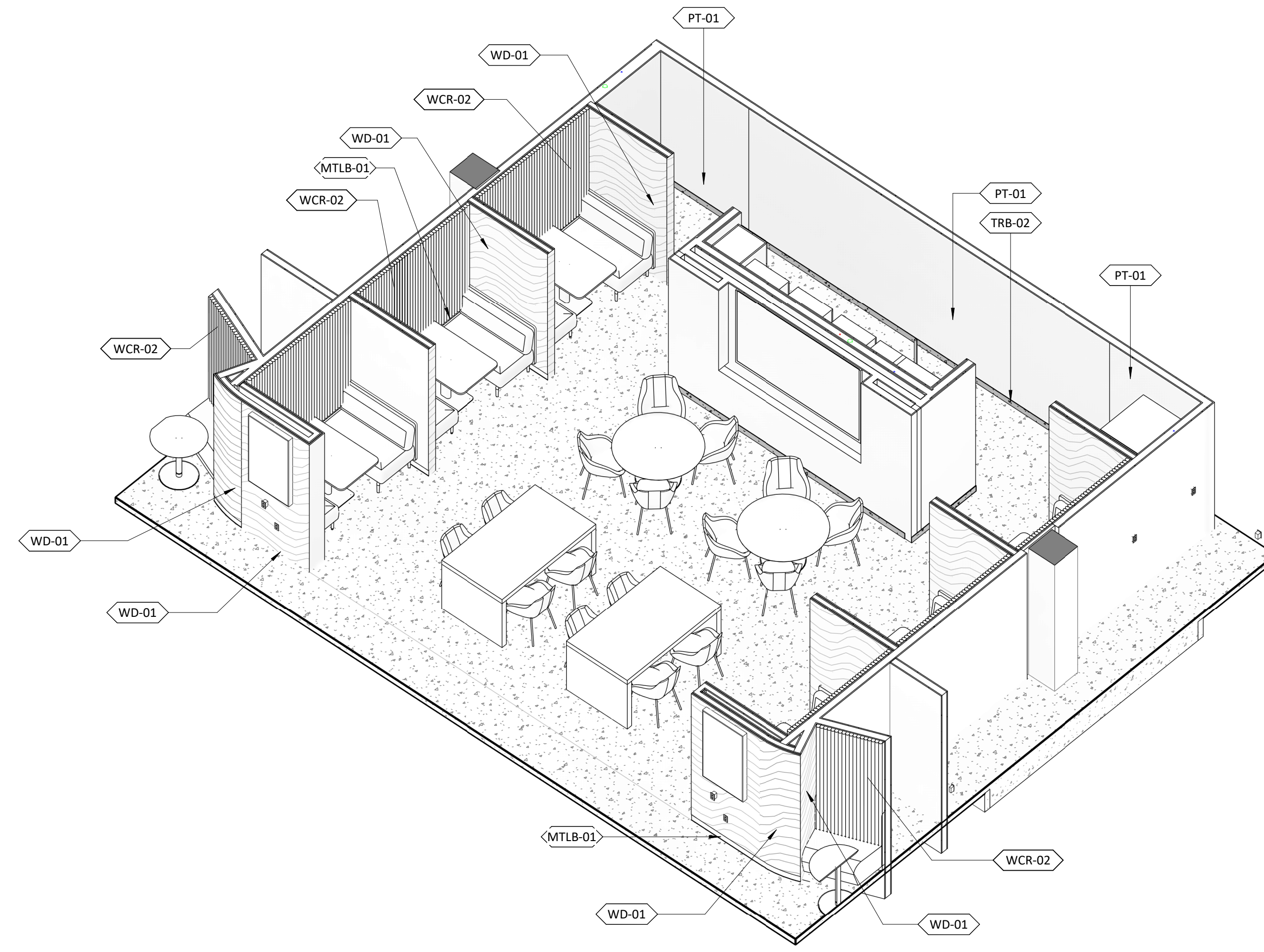
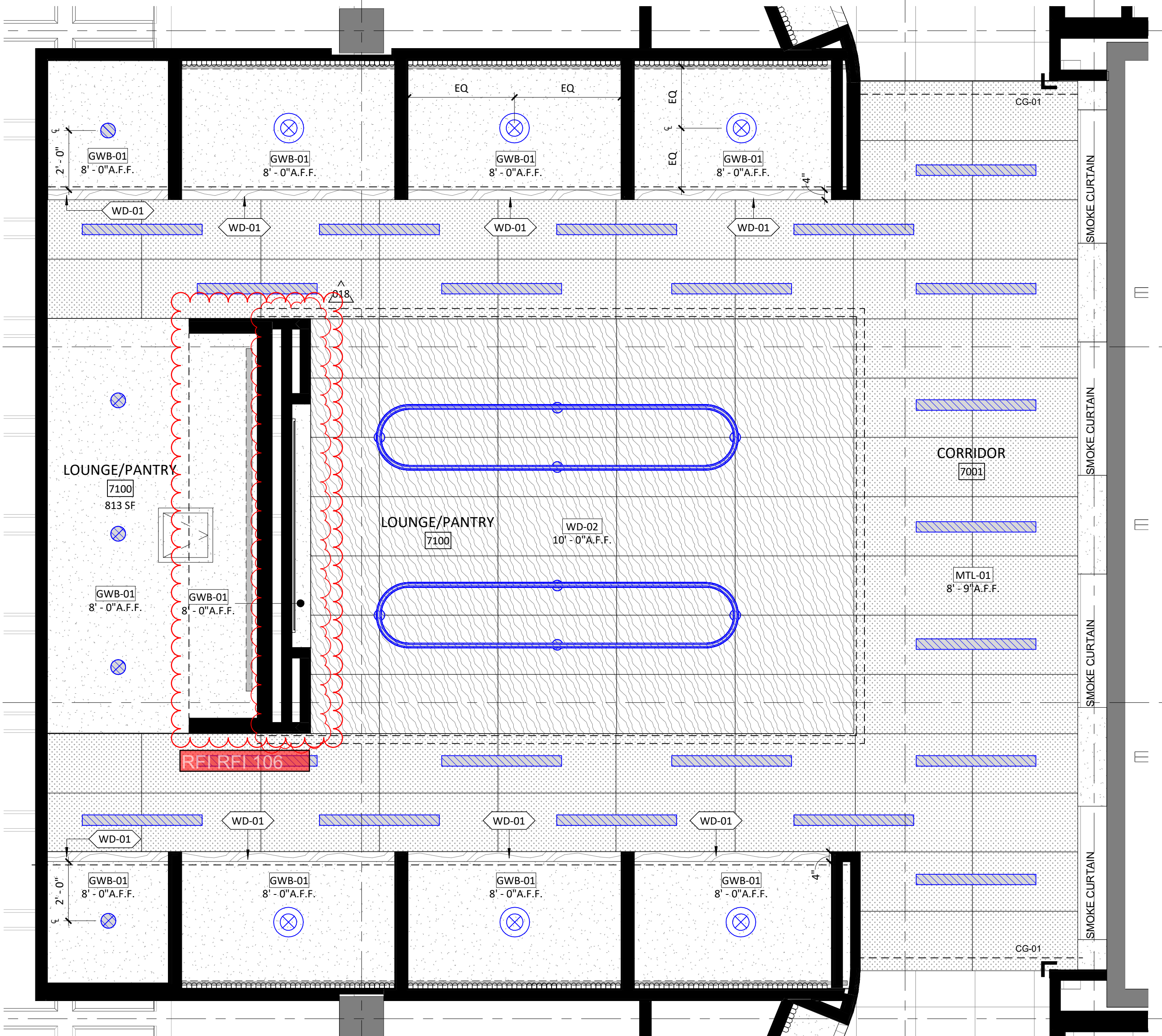


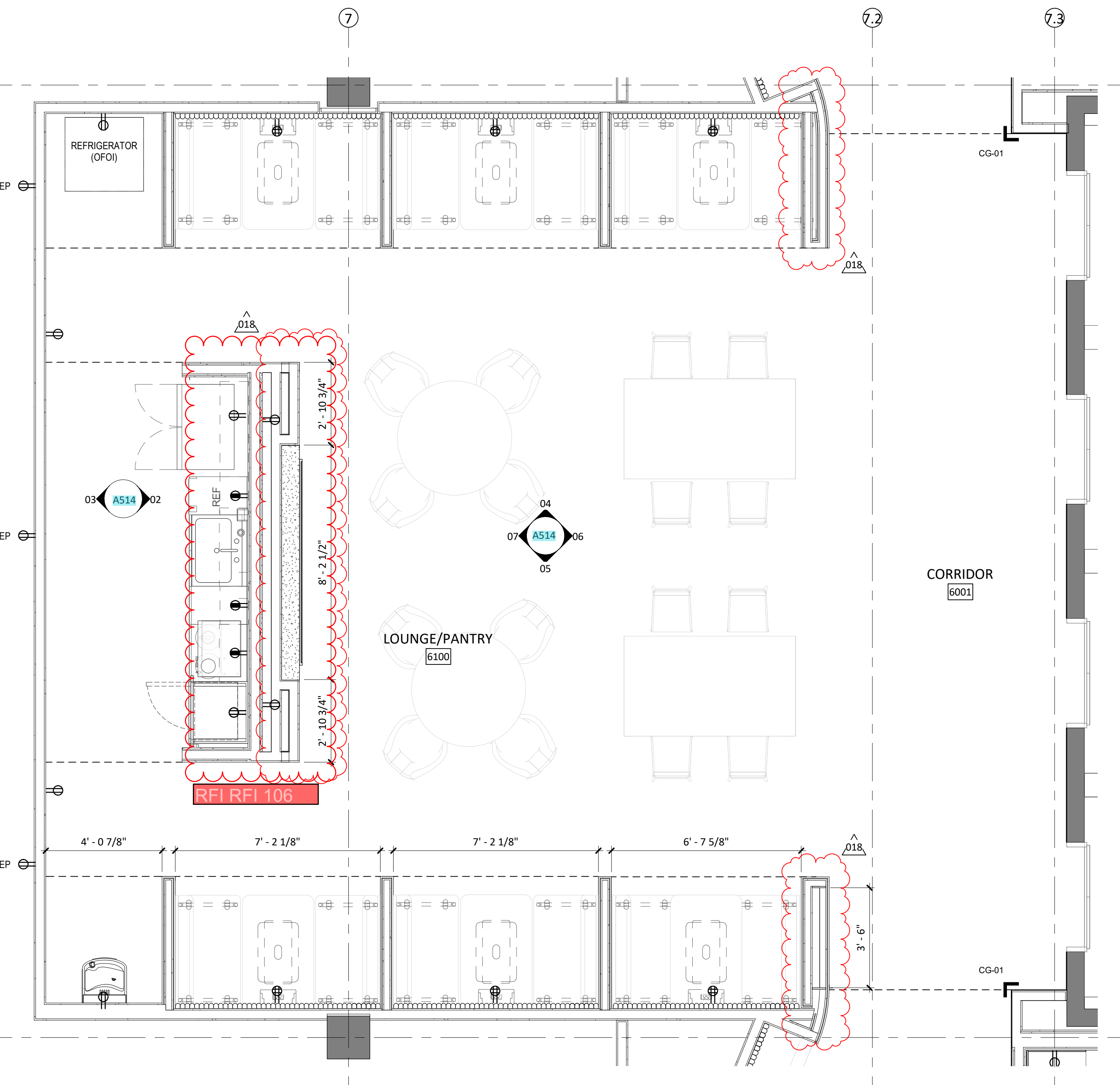
FOR REFERENCE
ONLY



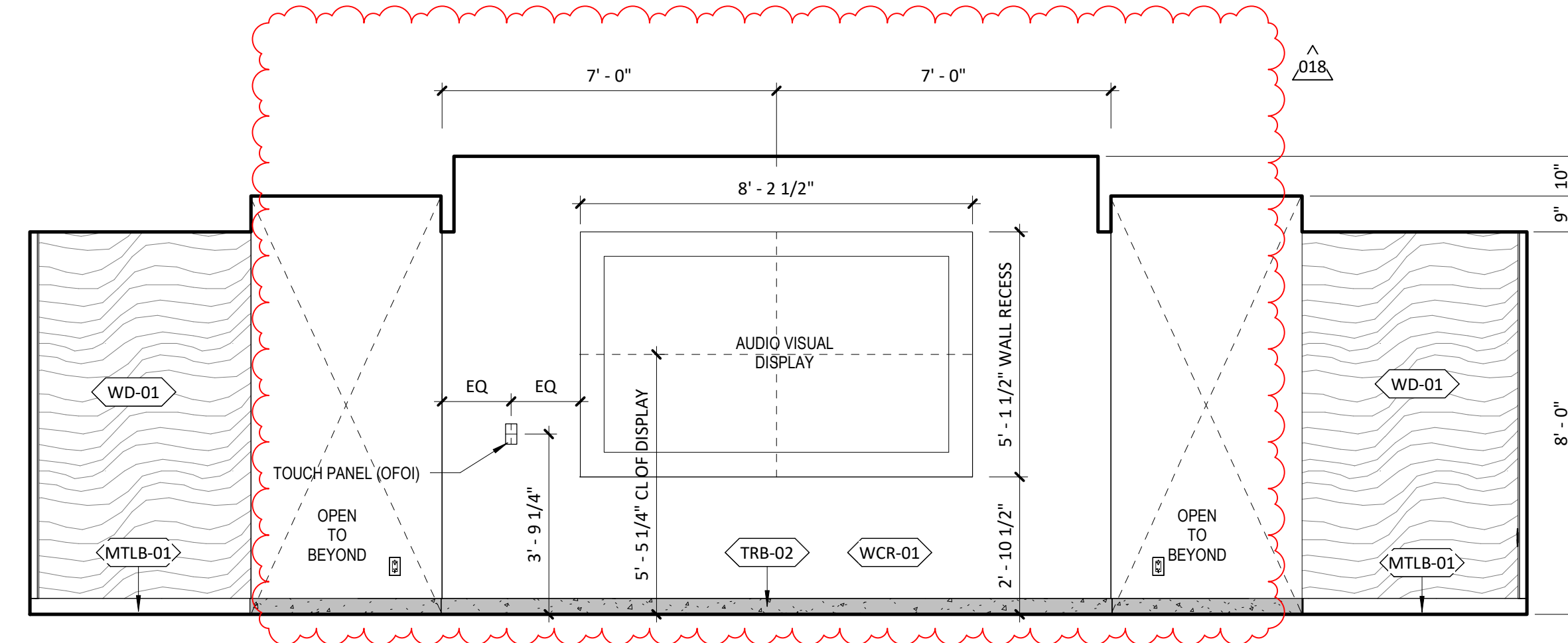
09 LOUNGE/PANTRY AXON



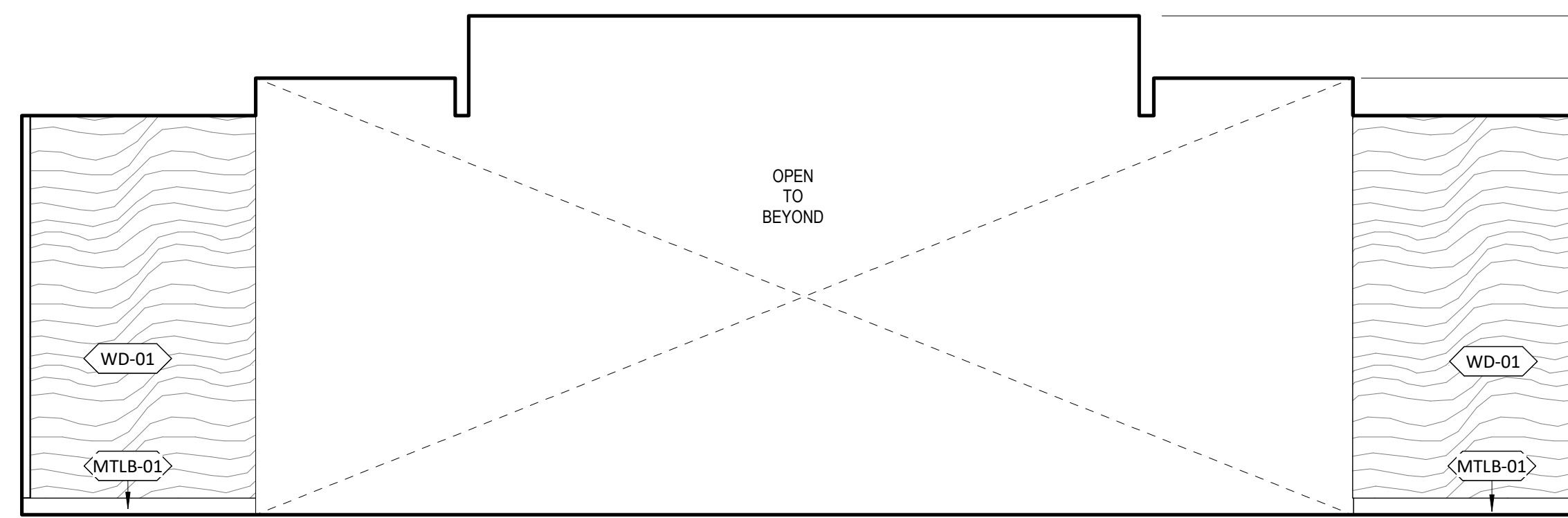
08 TYP. ENLARGED RCP - LOUNGE/PANTRY



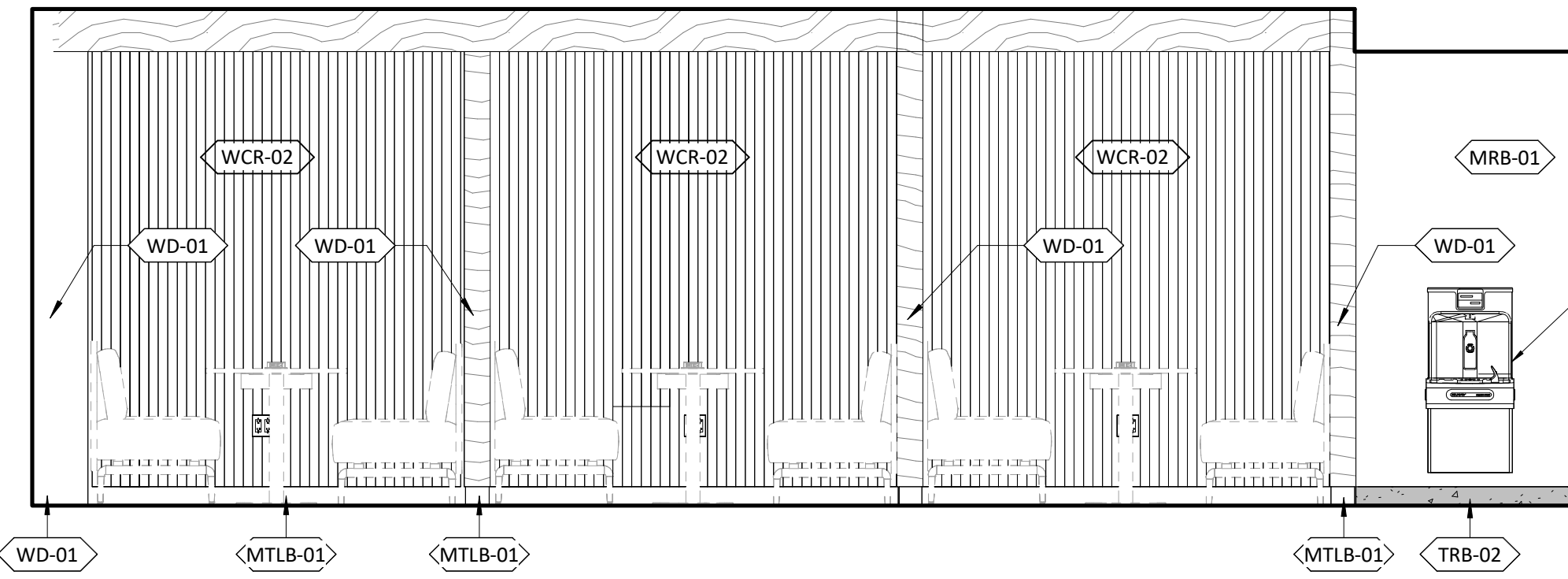
01 TYP. ENLARGED PLAN - LOUNGE/PANTRY



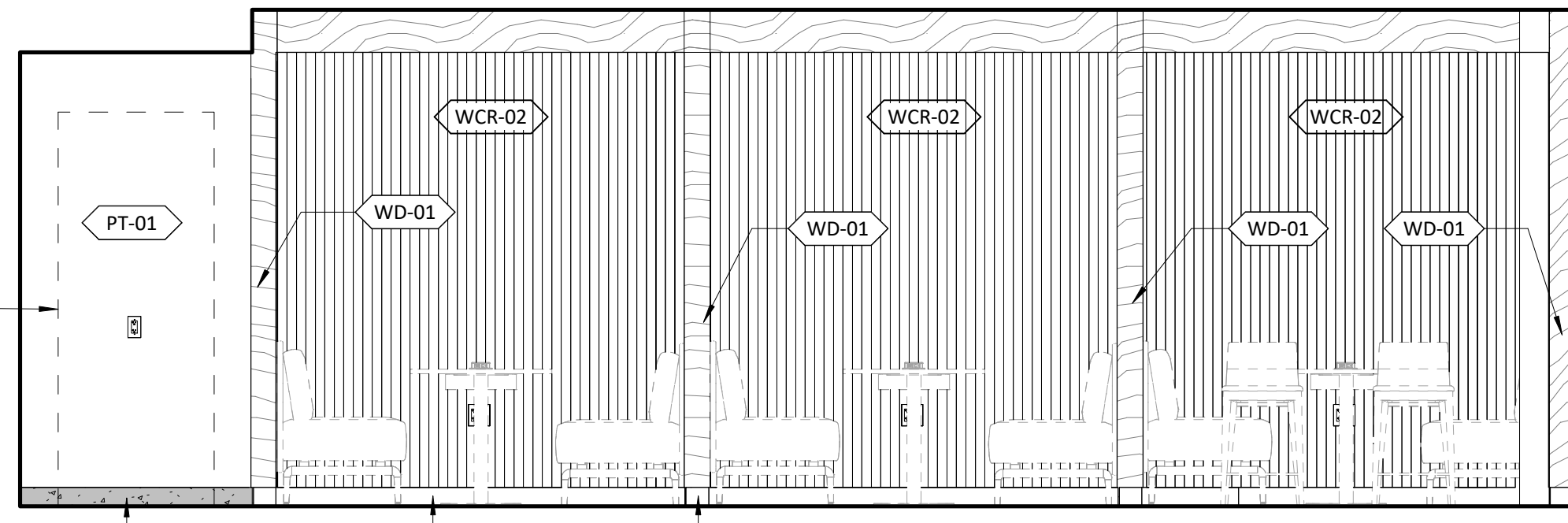
07 TYP. ELEV. - LOUNGE/PANTRY NORTH



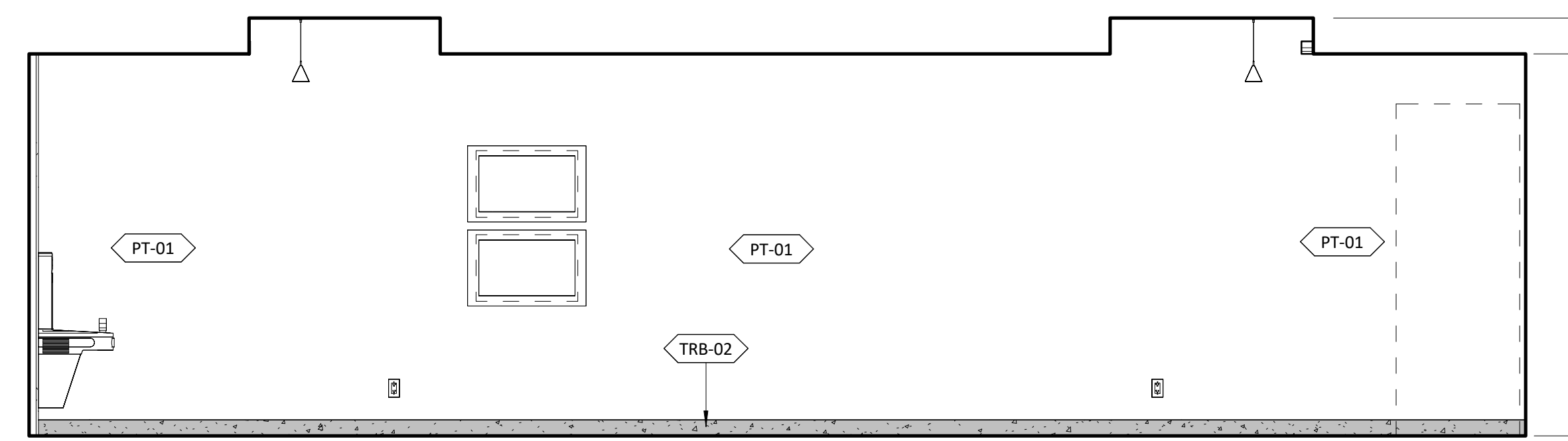
06 TYP. ELEV. - LOUNGE/PANTRY SOUTH



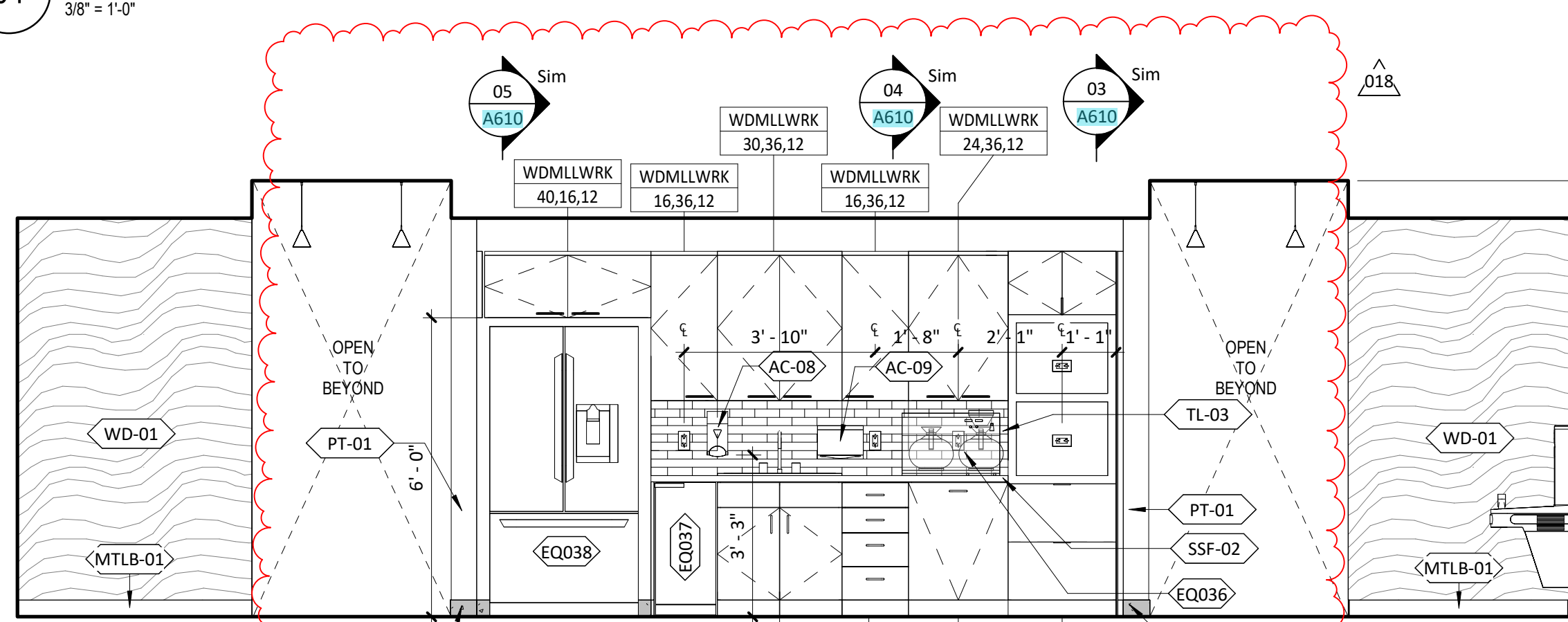
05 TYP. ELEV. - LOUNGE/PANTRY EAST



04 TYP. ELEV. - LOUNGE/PANTRY WEST



03 TYP. ELEV. - PANTRY NORTH



02 TYP. ELEV. - PANTRY SOUTH

multistudio
the evolution of gould evans

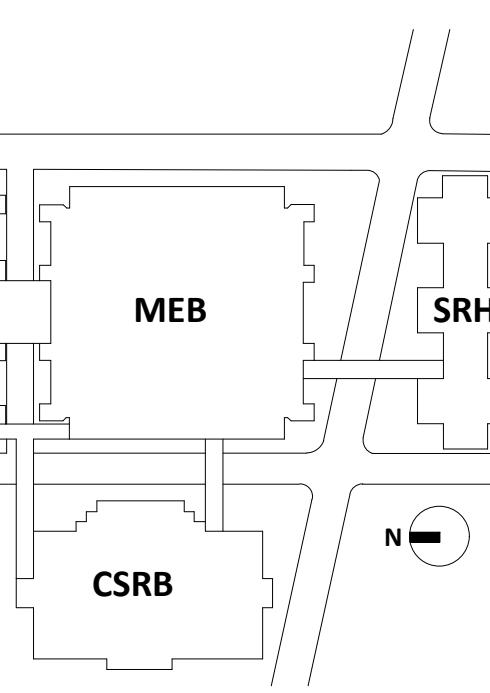
PERKINS
EASTMAN

LSU-HSC MEB
LABORATORY
RENOVATION

1901 PERDIDO STREET
NEW ORLEANS, LA 70112

Project Number:
owner:
State of Louisiana - Facility Planning and Control
1201 N. Third St., Suite 7-210
Baton Rouge, LA 70802
225.342.7000
www.dhs.la.gov/dsa/fpc/
architects:
Multistudio
2308 Magazine Street
New Orleans, LA 70115
504.488.5303
www.multistudio.com
Perkins Eastman
115 5th Ave.
New York, NY 10003
212.583.7200
www.perkinseastman.com
structural engineer:
Schreck, Edom & Flanagan Consulting Engineers,
4227 Bienville Avenue
New Orleans, LA 70113
504.482.7856
www.safegenerators.com
MEP/FP + technology engineer:
TLC Engineering Solutions
201 St. Charles Ave., Suite 4318
New Orleans, LA 70170
504.777.0040
www.tlc-engineers.com

Issue Date: January 12, 2024
Revisions
NUMBER DESCRIPTION DATE
017 RFI 008 Response (Change) TRB
018 Part B - AS102 12/27/2024



UNLESS A PROFESSIONAL SEAL WITH SIGNATURE AND DATE IS
AFFIXED, THIS DOCUMENT IS PRELIMINARY AND IS NOT INTENDED FOR
CONSTRUCTION, RECORDING PURPOSES OR IMPLEMENTATION



TYP. ENLARGED PLAN &
ELEVATIONS - LOUNGE
& PANTRY
A514
CONSTRUCTION
DOCUMENTS